



STUDENT ORIENTATION SPRING 2023



OUR MISSION

To provide quality higher education grounded in Anishinaabe values.



We observe and value the Seven Grandfather Teachings

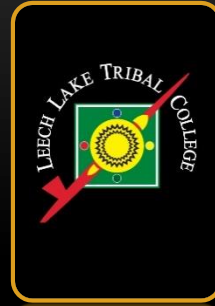


ADMINISTRATION TEAM



Dr. Helen Montgomery

President
(218) 335-4280
helen.montgomery@lltc.edu



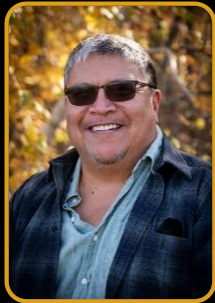
Dr. Stephen Moore

Dean of Academics
(218) 335-4255
stephen.moore@lltc.edu



Dr. Jorge Mendoza

Dean of Students
(218) 335-4262
jorge.mendoza@lltc.edu



Burt Howard

Director of Finance
(218) 335-4253
burt.howard@lltc.edu



TBD

Director of Operations
(218) 335-42xx
@lltc.edu



Carol White

Director of Human Resources
(218) 335-4234
carol.white@lltc.edu



Ryan White

Director of Advancement & P.R.
(218) 335-4280
helen.montgomery@lltc.edu



WIIDOOKAAGEWIN

"The Helping Room"



STUDENT SERVICES

Our mission is to focus on student success through collaboration of support services in a respectful, efficient and welcoming environment.

- Advising
- Athletics
- Recruitment
- Learning Center
- Registrar
- Admissions
- Wellness Center
- Financial Aid

<https://www.lltc.edu/student-services/>



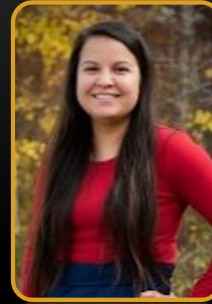
STUDENT SERVICES TEAM



Dr. Jorge Mendoza
Dean of Students
(218) 335-4262
jorge.mendoza@lltc.edu



Roselynn Jones
Academic Advisor
(218) 335-4211
roselynn.jones@lltc.edu



Samantha Fairbanks
Outreach Recruiter &
Admissions Coordinator
(218) 335-4286
samantha.fairbanks@lltc.edu



Cindy Wilson
Registrar
(218) 335-4222
cindy.wilson@lltc.edu



Raven Roybal
Administrative & Admissions Assistant
(218) 335-4220
raven.roybal@lltc.edu



TBD
Financial Aid Specialist
(218) 335-4270
@lltc.edu



Jacqueline Dotson
Academic Success Counselor
(218) 335-4248
jacqueline.dotson@lltc.edu



Mike Montgomery, LGSW
Wellness Center Director
(218) 335-4265
mike.montgomery@lltc.edu



ACADEMICS TEAM



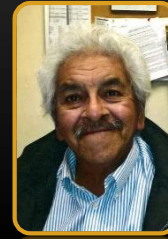
Dr. Stephen Moore
Dean of Academics



Anyea Hake
English Instructor



Audrey Thayer
Arts & Humanities Instructor



Bob Jourdain

Ojibwe Language Instructor



Brent Silvis

Natural Science Instructor



Elaine Fleming

Arts & Humanities Instructor



Eric Kuha
Natural Science &
Technology Instructor



Frank Homer
Law Enforcement Instructor &
Program Coordinator



Joey Riley
Natural Science Instructor



Kelly Nipp
Math Instructor



Lucas Whiting
Electrical Technician Instructor



Waase Paulson
Early Childhood
Education Instructor



Neah Goodwin
Math Instructor



Nyleta Belgarde
Ojibwe Language Instructor



Rocky Carpenter
Carpentry Instructor



Ryan O'Leary
Business Instructor



Saul Saucedo
Carpentry Instructor



Stacie Lyon
Behavioral Science Instructor



DISTANCE EDUCATION



PROVIDES SUPPORT WITH:



Antonio Arce

Distance Education Coordinator
(218) 335-4252
antonio.arce@lltc.edu

- SOLOS
Student Online Learner Orientation Support
- LLTC Student Resources
- Computer Basic Skills
- Scholarship Resources
- Canvas
- Zoom

<https://www.lltc.edu/academics/distance-education/>



LIBRARY & LEARNING CENTER



Kim Dickson

Director of Library & Learning Center
(218) 335-4240
kim.dickson@lltc.edu



Lacey Calvert

Library & Learning Center Assistant
(218) 335-4244
lacey.calvert@lltc.edu

LIBRARY HOURS

- M, T, TH & F: 8am-4:30pm
- Wednesday: 8am-6:30pm

TUTORING SERVICES

- In-person tutoring available for drop-in services
- Tutoring Zoom meetings can be arranged by contacting Kim Dickson
- Professional Math Tutor:
Neah Goodwin at neah.goodwin@lltc.edu
- Professional Reading/Writing Coach:
Chandler See at chandler.see@lltc.edu



FINANCIAL AID

FAFSA (Federal Student Aid)

- In order to qualify for **Pell Grant / MN State Grant / MN Indian Scholarship** you must complete the **FAFSA** application form.
- Visit **fafsa.gov** online OR download the app to complete application
- After you complete your application:
 - LLTC financial aid office will receive your student record
 - The government may require additional documentation for you to qualify for student aid

Financial Aid Office

- Provides budgets and processes any scholarships/grants you receive from various entities including Tribal scholarships

- You will receive scholarship money only *after* LLTC receives the money from the scholarship entity
- **Your job as a student is to go to class.** If you fail to attend classes for 14 consecutive days, you will be withdrawn. This could result in aid money being returned and you owing money back to LLTC.



TBA

Financial Aid Specialist
(218) 335-4270
@lltc.edu

<https://www.lltc.edu/financial-aid/>



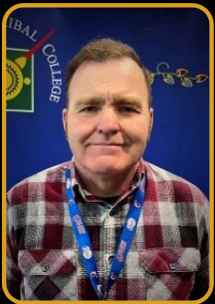
MINO-AYAAWIGAMIG

"Wellness Center"



PROVIDES SUPPORT WITH:

- Food pantry
- Mental health services
- Referrals to community based assistance programs
- Access to fitness center
- Nursing and changing room
- Access to traditional medicines
- Assistance with Dreamkeepers
- Healthy eating & exercise initiatives



Mike Montgomery, LGSW

Wellness Center Director
(218) 335-4265
mike.montgomery@lrtc.edu



CAMPUS SECURITY

Commercial Smoke Free Campus

This college campus is smoke free including all vehicles that are on campus. This also includes vaping.

Drug & Alcohol Free Campus

If you had an eventful evening because the Vikings won the Super Bowl and you are still under the influence the next morning, stay home! It's better to stay home for our safety and yours.

Weapons ARE NOT ALLOWED!

This includes guns, knives and explosives

Bullying, Harassment, Sexual Harassment, and Stalking will not be Tolerated

We want everyone to feel comfortable in our college community and respect other people's boundaries. I have an open door policy. Feel free to swing in if you have any concerns.

Snow Days

LLTC follows the CLB School District weather announcement. Use your own discretion on snowy, icy, or below freezing days. If you don't feel safe, stay home – **but contact your instructor!**

Lost and Found

If you lost or found something, notify me or Glenda (Oak Hall Receptionist).

Security Cameras

The cameras are always on and recording inside and outside the buildings.



John "JR" Robinson

Campus Security Officer

(218) 335-4260

john.robinson@lltc.edu



INFORMATION TECHNOLOGY “IT” DEPARTMENT



Kelvin Walters
IT Support Specialist
(218) 335-4233
kelvin.walters@lrtc.edu



Shawn Cruze
IT Support Specialist
(218) 335-4223
shawn.cruze@lrtc.edu

PROVIDES SUPPORT WITH:

- Password resets
- Technology use
- Troubleshooting tech issues
- Laptop and Hotspot sign-outs
- * *Will not work on any personal computers*

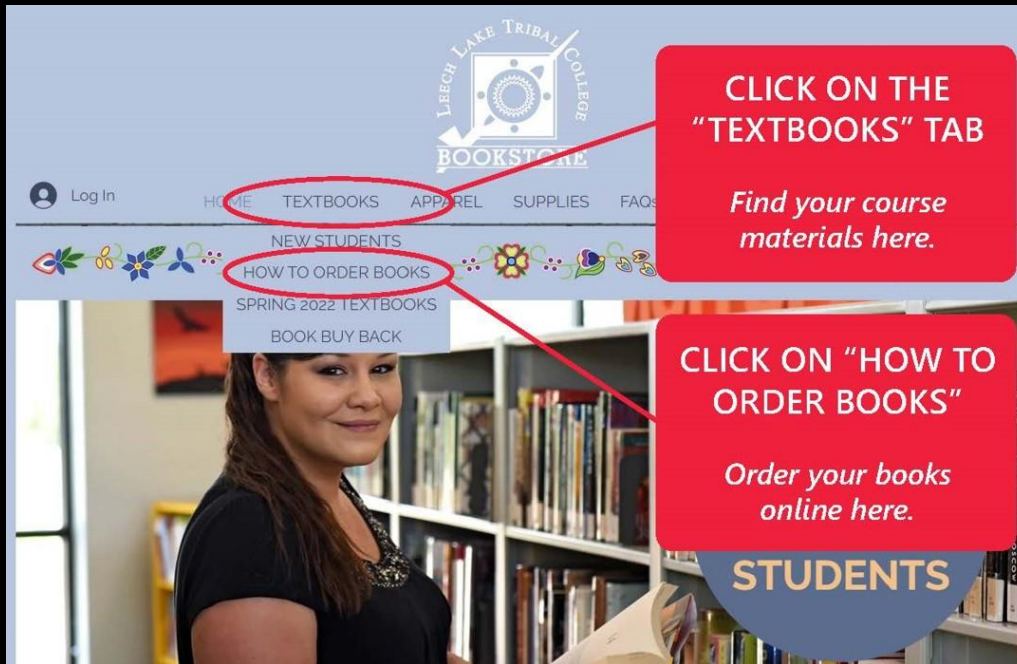
To request IT help email:
ITG<InformationTechnology@lrtc.edu



BOOKSTORE

Visit www.lltcbookstore.com to order your books.

- Books can be charged against financial aid you receive spring semester – ONLY if you complete your **FAFSA** application and qualify.
- You can **order** your books online starting: **January 3rd**
- You can **pick up** your books in the bookstore starting: **January 9th**



BOOKSTORE HOURS:

Monday-Friday
9am-4pm



Emily Raymond
Marketing & Brand Manager
(218) 335-4214
emily.raymond@lltc.edu



STUDENT SERVICES SUPPORT



Dean of Students

Jorge Mendoza: jorge.Mendoza@lltc.edu / 218-335-4262

Emergency Aid Funds & Wellness Center

mike.montgomery@lltc.edu / 218-335-4265

Academic Advising & Food/Gas Assistance

Food/Gas – Cass Lake

roselynn.jones@lltc.edu / 218-335-4211

Food/Gas – Bemidji

jacqueline.dotson@lltc.edu / 218-335-4248

Admissions Support & Recruitment

samantha.fairbanks@lltc.edu / 218-335-4286

Front Desk & Admissions Assistant

raven.roybal@lltc.edu / 218-335-4220

Other Campus Support

Library & Learning Center

kim.dickson@lltc.edu / 218-335-4240

Registrar

cindy.wilson@lltc.edu / 218-335-4222

Business Office

missy.larose@lltc.edu / 218-335-4204



LLTC STUDENT HANDBOOK



DOCUMENT INCLUDES

Mission Statement & Objectives

Community at LLTC

Student Code of Conduct

[Click Here To Download Student Handbook](#)



COVID-19 POLICIES & PROCEDURES



DOCUMENT INCLUDES

General Campus Behavior Guidelines

Employees, Student Workers & Interns Policies

Student Policies

Visitor/Guest Policies

Cultural Events, Annual Celebrations & Special Events

Cleaning/Sanitation Procedures

FAQ

[Click Here To Download Full Document](#)



KEYS TO YOUR SUCCESS!



- ☑ **Communicate with your instructors constantly**
- ☑ **Attend all of your classes**
- ☑ **Turn in your assignments on time**
- ☑ **Ask for assistance early (do not wait)**

<https://www.lltc.edu>

